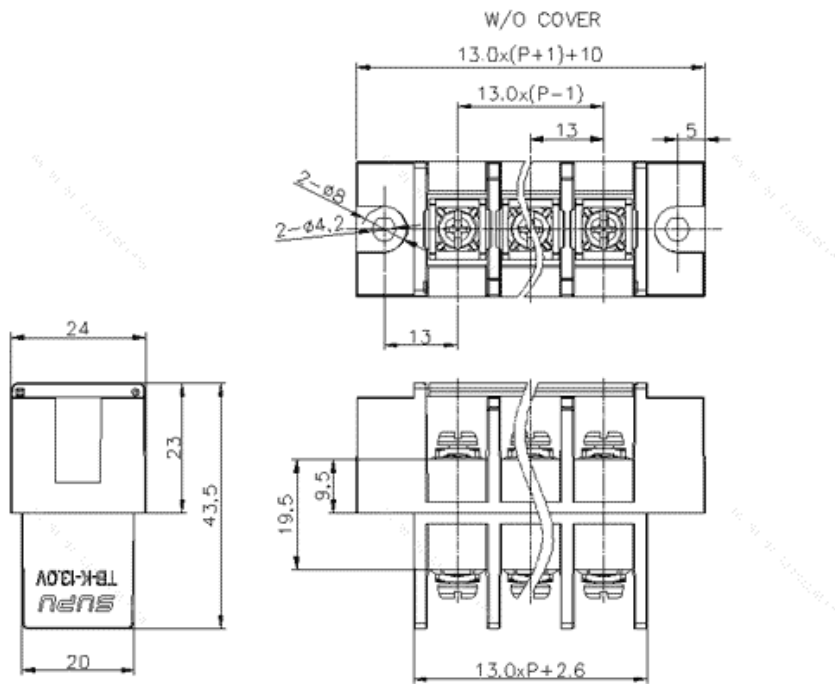


Product Type: Barrier terminal

Product Name:TB-K-13.0V02C-001

Product Description: pitch : 13.0mm, rated voltage UL600V, rated current UL150A, color: black, Rated cross section 22-8AWG

Product Size



Parameters

☞ SUPU ID	TB-K-13.0V02C-001
☞ Pitch	13.0
☞ Number of levels	single layer
☞ Number of connections	2

☞ Connection method	Screw connection
☞ Protection Level	IP20
☞ Operating temperature range	-30°C ~+120°C
☞ Insulation material	PBT+GF
☞ Insulation material group	III
☞ Contact material	Copper alloy
☞ Contact plating	Sn plated

Technical data

☞ IEC Rated Current	40/40/40
☞ IEC Rated Voltage	800/1000/1000
☞ Overvoltage category	III/III/ II
☞ Degree of pollution	3/2/2
☞ Rated impulse voltage	/
☞ Conductor cross section rigid	1.5-10
☞ Stripping length	11-12
☞ Tightening torque	10.53
☞ Connection capacity AWG	22-8
☞ UL Rated Current	40/40/5
☞ UL Rated Current	600/600/600

Commercial data

☞ Order No	TB-K-13.0V02C-001
------------	-------------------

Ningbo SUPU Electronics Co., Ltd.

Address: No. 150, Xinxing 4th Road, High-tech Industrial Development Zone,
Cixi City, Zhejiang Province, China

Zip code: 315303

Switchboard: +86 574-63288158

Fax: +86 574-63288170

E-mail:supucontact@supu.cn

Service Hotline: 400-626-6336



Wechat

Date:2025-07-21 10:53

The right to modify data belongs to SUPU.