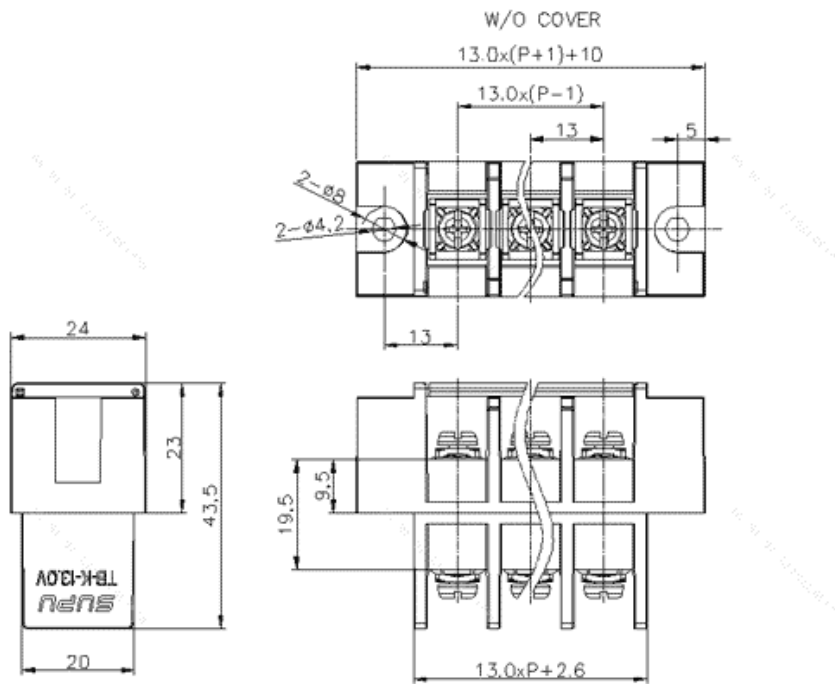


Product Type: Barrier terminal

Product Name:TB-K-13.0VXXC-001

Product Description: pitch : 13.0mm, rated voltage UL600V, rated current UL150A, color: black,Rated cross section 22-8AWG

Product Size



Parameters

| | |
|-------------------------|-------------------|
| ☞ SUPU ID | TB-K-13.0V02C-001 |
| ☞ Pitch | 13.0 |
| ☞ Number of levels | Single layer |
| ☞ Number of connections | XX |

| | |
|-------------------------------|------------------|
| ☞ Connection method | Screw connection |
| ☞ Protection Level | IP20 |
| ☞ Operating temperature range | -30°C ~+120°C |
| ☞ Insulation material | PBT+GF |
| ☞ Insulation material group | III |
| ☞ Contact material | Copper alloy |
| ☞ Contact plating | Sn plated |

Commercial data

| | |
|------------|-------------------|
| ☞ Order No | TB-K-13.0V02C-001 |
|------------|-------------------|

Ningbo SUPU Electronics Co., Ltd.

Address: No. 150, Xinxing 4th Road, High-tech Industrial Development Zone,
Cixi City, Zhejiang Province, China

Zip code: 315303

Switchboard: +86 574-63288158

Fax: +86 574-63288170

E-mail:supucontact@supu.cn

Service Hotline: 400-626-6336



Wechat

